

DESCRIPTION

AMC MODEL SW-2000-8AT-200 IS AN ABSORPTIVE SP8T SWITCH MODULE DESIGNED TO MAINTAIN LOW HARMONIC RF CONTENTS, AND HIGH ISOLATION FROM EXTENSIVE NOISY ENVIRONMENTS BY APPLYING OPTO-ISOLATORS ON CONTROL SIGNAL PORTS AND VOLTAGE TRANSIENT SUPPRESSORS. APPLICATIONS ARE FOR HIGHLY SENSITIVE LOW-NOISE RADARS, MISSILE SYSTEMS, EW-SYSTEMS, ETC.

SPECIFICATIONS

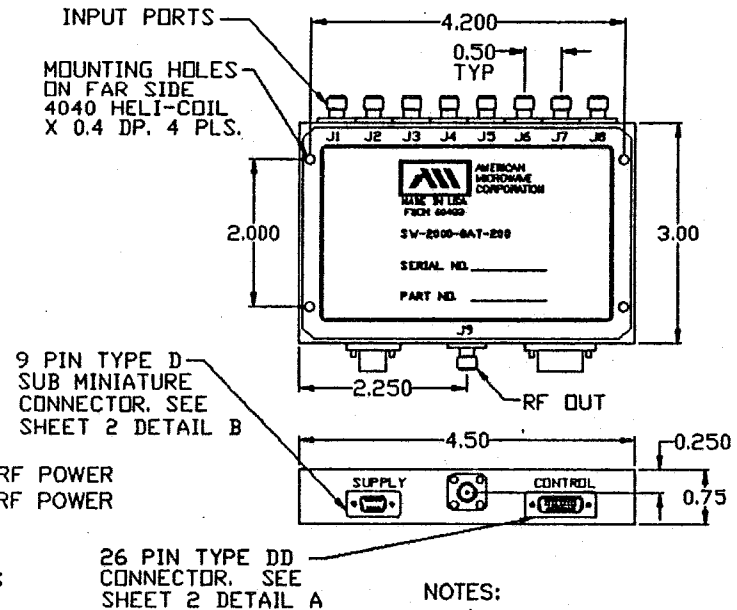
- FREQUENCY RANGE 250-500 MHz MINIMUM
- INSERTION LOSS 0.5 dB MAXIMUM
- ISOLATION 80 dB MINIMUM
- VSWR (ON/OFF) 1.5:1 MAXIMUM
- SWITCHING TIME
 - RISE (10% RF TO 90% RF) 150 nS MAXIMUM
 - FALL (90% RF TO 10% RF) 250 nS MAXIMUM
 - ON (50% TTL TO 90% RF) 200 nS MAXIMUM
 - OFF (50% TTL TO 10% RF) 500 nS MAXIMUM
- RF POWER RATINGS 1W CW, MAXIMUM
- HARMONIC CONTENT
 - 2nd HARMONIC -80 dBC MAXIMUM @ +10dBm INPUT RF POWER
 - 3rd HARMONIC -110 dBC MAXIMUM @ +10dBm INPUT RF POWER
- RF LEAKAGE (CONDUCTIVE/RADIATED) ... > 80 dBC @ 500 MHz
- CONTROLS DIFFERENTIAL TTL, WITH OPTO COUPLERS;
8 INDIVIDUAL CONTROL PAIRS.
LOGIC "1" INSERTION LOSS
LOGIC "0" ISOLATION
- POWER SUPPLY +5 ±0.25VDC @ 380 mA MAXIMUM
-5.2 ±0.25VDC @ 440 mA MAXIMUM
DC LINES ARE FILTERED TO PREVENT
RF LEAKAGE AND PROVIDE TRUE
POWER SUPPLY DECOUPLING.
- CONNECTIONS
 - RF INPUT/OUTPUT SMA FEMALE
 - CONTROL 26 PIN TYPE DD
 - SUPPLY 9 PIN SUB MINIATURE TYPE D
- SIZE 4.50" x 3.00" x 0.75"

AVAILABLE OPTIONS

- A01 ±12 TO ±18VDC SUPPLIES
- A02 EXTENDED FREQUENCY BAND FROM 10 MHz TO
2000 MHz (RF PERFORMANCE IS SUBJECT
TO CHANGE, CONSULT FACTORY)
- A03 INVERSE CONTROL LOGIC (LOGIC "0" INSERTION LOSS)
- A04 SMA MALE CONNECTORS

REVISIONS				DATE	APPROVED
ZONE	REV.	DESCRIPTION			
	A	ORIGINAL RELEASE, JOB # 1101995		11/17/92	<i>WJP</i>

MECHANICAL OUTLINE




NOTES:

- 1) DIMENSIONS ARE IN INCHES
- 2) TOLERANCES: X.XX ±0.020
X.XXX ±0.010
- 3) WEIGHT: APPROX. 14 OZ

ENVIRONMENTAL RATINGS

- TEMPERATURE -55°C TO +95°C (OPERATING)
-65°C TO +125°C (STORAGE)
- HUMIDITY MIL-STD-202F, METHOD 103B COND. B
- SHOCK MIL-STD-202F, METHOD 213B COND. B
- VIBRATION MIL-STD-202F, METHOD 204D COND. B
- ALTITUDE MIL-STD-202F, METHOD 105C COND. B
- TEMPERATURE CYCLE MIL-STD-202F, METHOD 107D COND. A

		AMERICAN MICROWAVE CORPORATION 7311G GROVE RD., FREDERICK, MD. 21701 TEL: (301) 662-4700 FAX: (301) 662-4938	
APPROVALS	DATE	PRODUCT FEATURE SW-2000-8AT-200 250-500 MHz, NON-REFLECTIVE, NOISE IMMUNE SP8T SWITCH MODULE WITH TTL COMPATIBLE OPTO-COUPLER	
DRAWN <i>WJP</i>	11/17/92		
CHECKED <i>[Signature]</i>	11/22/92		
SIZE A	SHEET 1 OF 2	DWG. # 100-2814	